



AFR
Controls

COMPANY PROFILE

CELEBRATING 25 YEARS

 TÜV Rheinland CERTIFIED	Management System ISO 9001:2015	
	www.tuv.com ID 9000007135	

ABOUT US

- ▶ Since 1995 AR Controls has been offering innovative and efficient process and control valve solutions to our industrial clients in the minerals, petro & chemical, iron & steel, power generation, pulp & paper, food & beverage, and upstream oil & gas industries.
- ▶ AR Controls is a multinational company with direct operations in Africa and the Central Americas, with an aggressive forward-thinking strategy to opening new operations soon in South America and Australasia/Pacifica.
- ▶ AR Controls has an extensive network of factory trained and competent stocking distributors throughout Africa.
- ▶ AR Controls adopts a strict quality management system certified to ISO9001:2015

ABOUT US

- ▶ AR Controls wholly owns the INCOVALVE & CONTROLS and ARVALV brands of industrial process and control valves, as well as holds the exclusive African and Central American distributorship for the renowned DeZurik Apco Hilton brand of industrial process and control valves.
- ▶ AR Controls together with its long-term manufacturing partners have foundry, machining, manufacturing and assembly facilities in South Africa, USA, Canada, India, South Korea and China.
- ▶ AR Controls is widely recognised as one of the largest global valve stockists for knife gate; butterfly; ball and non-return valves and is capable of rapid deliveries on turn-key green and brown fields projects.

ABOUT US

- ▶ Since AR Controls is solution-based rather than commodity-based, time is spent on pre-engineering in fitting custom designed products which suite the requirements and produce the desired result, thus saving our clients in time, money and production losses.
- ▶ AR Controls forges an end user value-add supply chain partnership with its clients, by providing innovative solutions through superior valve and automation products and a commitment to the rapid and on-time delivery of its products and services.
- ▶ As a company, AR Controls continues to grow and is constantly investing in inventory, engineering and R&D, human resources and technological advancement.

VISION AND MISSION STATEMENT

Vision

“To create long term sustainable growth and profitability through becoming a global leader in the manufacture of process and control valves and automation!”

Mission

“We will achieve this through uncompromised work ethics; adopting innovative technologies and the latest manufacturing methods in offering our clients premium engineered products yielding the lowest cost of ownership and the highest return on investment whilst leaving the least impact on the environment!”

SERVICE AND SUPPORT

- ▶ AR Controls prides itself on its reputation for being recognised as a market-leading supplier of an all-in-one solutions offering for processing projects and operations that require products for isolating and controlling the flow of erosive and corrosive media at low, mid and high-pressure ratings. The company continues to consolidate on this reputation by embracing the following fundamental business practices;
 - ▶ In-depth Product and Industry Expertise
 - ▶ Comprehensive stockholding
 - ▶ Premium brand offering
 - ▶ Fixed pricing agreements
 - ▶ Technical support and other value-added services

IN-DEPTH PRODUCT AND INDUSTRY EXPERTISE

- ▶ AR Controls employs a team of highly-qualified mechanical and sales engineers that boast combined industry experience of more than 240 years. To this end, AR Controls has comprehensive knowledge and understanding of its clients' processes.
- ▶ This expertise, together with a well-trained and knowledgeable sales team, ensures AR Controls has unrivalled industry expertise in providing its clients with a fully-customised solution that is designed entirely around the specific needs of each individual process, application or project.

COMPREHENSIVE STOCKHOLDING

- ▶ Large processing plants cannot afford costly shutdowns as a result of prolonged supplier turnaround times. AR Controls stock thousands of units of a comprehensive range of valves and instrumentation, making it the largest stockist of its kind in Africa and Central America.
- ▶ This ensures that the company can provide substantially faster turnaround times than most of its competitors, which ultimately translates into higher efficiency and cost savings for our clients.

PREMIUM PRODUCT OFFERING

- ▶ Valves stocked and supplied by AR Controls are designed in accordance to:
 - ▶ ASME B16.34; ASME B16.10; MSS-SP-81; MSS-SP-135; API602; API603; AIP607; API608; API609; API6D; EN558-1; EN12516-1; DIN3202; CE/PED.
- ▶ Testing is done in accordance to:
 - ▶ API598; API6D; EN12266-1 and MSS-SP-151.
 - ▶ EN10204 Type 3.1 certificates accompany all INCOVALVE and INCOLOK products.
- ▶ INCOAIR rotary actuators are SIL 3 and CE certified.
- ▶ AR Controls' quality management system is certified to ISO 9001:2015

FIXED PRICING AGREEMENTS

- ▶ For interested clients that have a significant installed base of AR Controls' products, our company strongly promotes fixed pricing agreements (FPAs).
- ▶ These FPAs are effective in establishing cost certainties for OPEX budgets, especially during the prevalence of market volatility.
- ▶ AR Controls' FPAs are structured to be value adding to the entire supply chain process. Our client's realise commercial value through discounted pricing structures on volume-based procurement, while engineering and maintenance departments realise gains in production (plant) availability by standardising on premium valve solutions offering the lowest total cost of ownership and highest return on investment.

AFTER SALES SERVICE

- ▶ Clear and effective communication is maintained with our clients through regular site visitations.
- ▶ The company offers full repair services on its entire range of OEM products.
- ▶ AR Controls product specialists can provide technician training on how to install and maintain valves and instrumentation, through hands-on demonstrations, seminars, video tutorials and literature. Exploded laminated installation and maintenance diagrams for OEM products are placed in maintenance workshops.
- ▶ In addition to providing substantial value to the client's overall operation, product training also results in the upskill of semi and unskilled workers often employed by our clients operating in developing countries.
- ▶ This upskill fosters pride and ownership.

PLANT AUDIT SERVICE

- ▶ AR Controls offers a plant survey and auditing service completed by experienced product and process specialists, who conduct a full tour and inspection of the client's production operations in determining inefficiencies or potential hazards pertaining to valves and instrumentation. A detailed report with factual findings and recommendations is submitted with the purpose of:
 - ▶ Correctly specifying valve design and materials of construction
 - ▶ Reducing valve turnover ratios
 - ▶ Increasing production (plant) availability
 - ▶ Ensuring standardisation
 - ▶ Reducing inventory costs

AR CONTROLS BRANDS



ARVALV

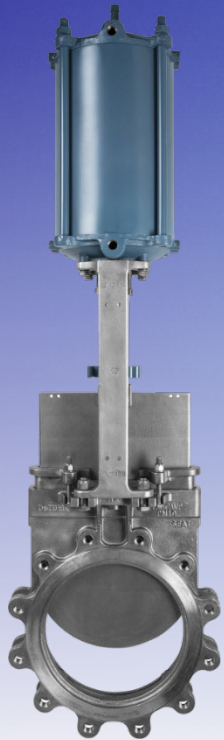
THROUGH-PORT KNIFE GATE
VALVE



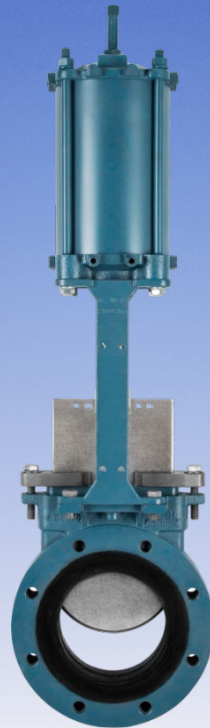
DeZURIK KNIFE GATE VALVES

15

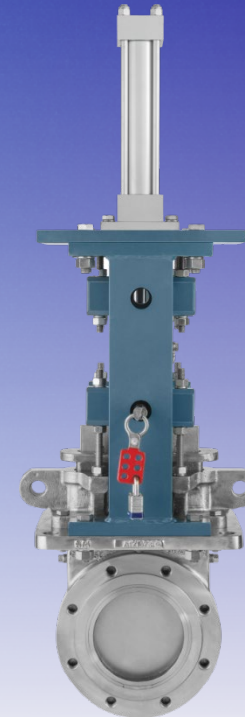
DeZURIK KGC
CAST STAINLESS STEEL
KNIFE GATE VALVES



DeZURIK KUL
URETHANE LINED
KNIFE GATE VALVES



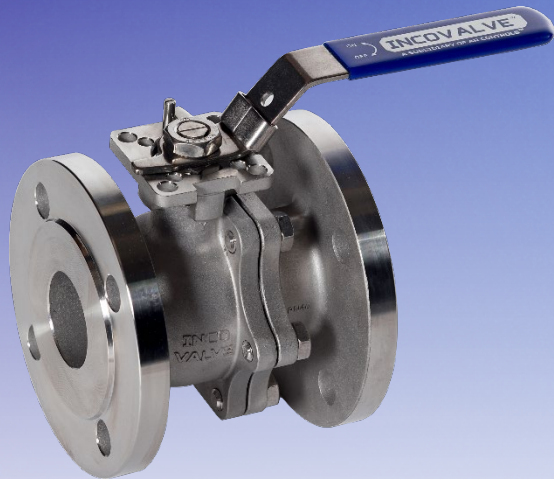
DeZURIK KSV
SEVERE SERVICE
KNIFE GATE VALVES



INCOVALVE BALL VALVES

F16 & F40

FULL PORT TWO-PIECE
FLANGED BALL VALVES



SERIES 63

FULL PORT THREE-PIECE
BALL VALVES



SERIES 134

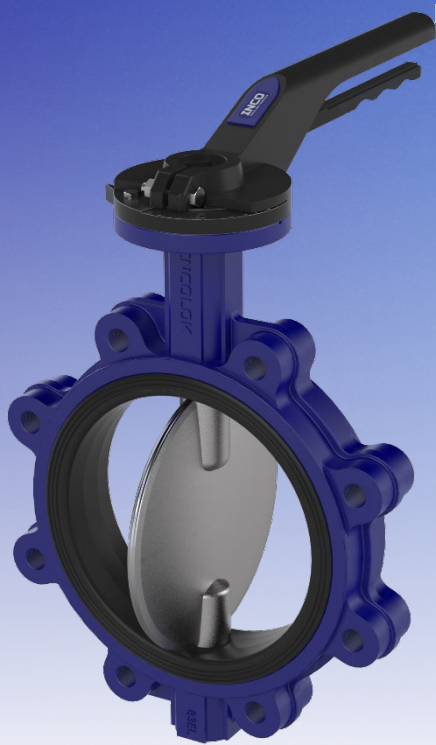
HIGH PRESSURE THREE-
PIECE BALL VALVES



INCOLOK BUTTERFLY VALVES

SERIES 100

RESILIENT SEATED
BUTTERFLY VALVE



SERIES 200

FULL PORT TWO-PIECE
FLANGED BALL VALVES

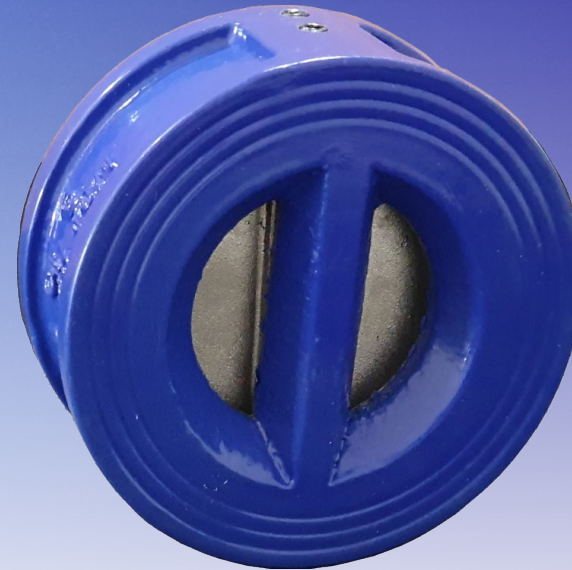


INCOVALVE CHECK VALVES

SERIES 71
SWING CHECK VALVES



SERIES 73
DUAL PLATE WAFER
CHECK VALVES



INCOAIR ROTARY AND LINEAR ACTUATORS

19

RT SERIES

PNEUMATIC RACK &
PINION ACTUATOR



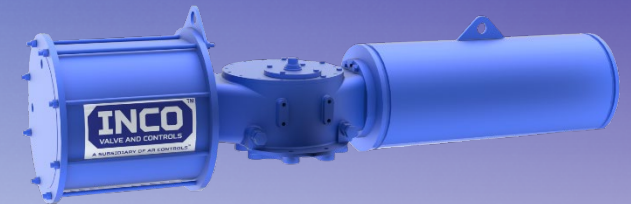
KG SERIES

DOUBLE ACTING AND AIR-
FAIL-SAFE LINEAR PNEUMATIC
ACTUATORS



HPY SERIES

SCOTCH YOKE
PNEUMATIC
ACTUATOR



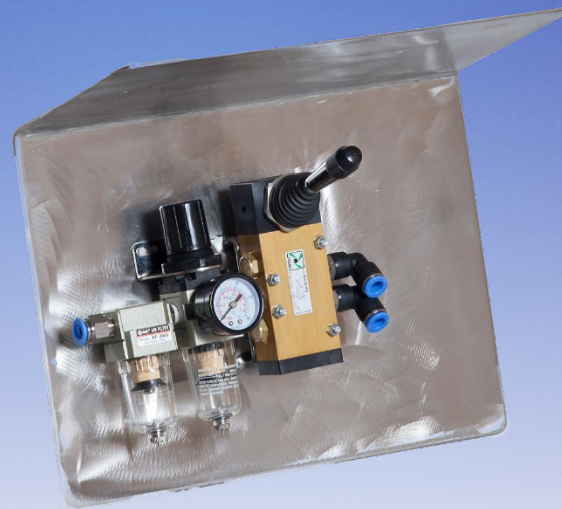
ACCESORIES

AIR FILTER REGULATORS,
LIMIT SWITCH BOXES,
SOLENOID VALVES ETC.



PANELS

CUSTOMISED PNEUMATIC
CONTROL PANELS



ENCLOSURES

CUSTOMISED PNEUMATIC
ENCLOSURES

